



# Dust Containment Systems

# Edger Dust Containment

All Eliminator systems come standard with super-long-life, oversized, single-element primary filters that are 99.9% efficient @ 0.5 micron. In normal operation with periodic cleaning, your filters may never need replacement for the life of the machine. With optional HEPA filtration, any Eliminator system will yield 99.97% efficiency @ 0.3 micron.



Model	Voltage	Max. Number of machines at one time	1 machine Max. Hose length/machine	2 machines Max. hose length/machine	3 machines Max. hose length/machine	System Includes
Edger II**	110*	2 Edgers/Buffers	100'	25'	N/A	(2) 2" x 25' hose; (1) "Y" manifold; (1) 2"-1.5" reducer
Edger II**	220	3 Edgers/Buffers	200'	100'	50'	(1) 3" x 25' hoses, (4) 2" x 25' hoses, (1) "Y" manifold; (2) 2"-1.5" reducers

\*220 volt available.

\*\* "Super" quiet motor silencer available. HEPA Filtration available on all models.

## Twenty Years of Field Proven Technology

The Eliminator z (Dust Filtration Systems) capture and filter the wood dust produced by floor sanding equipment before it becomes an airborne nuisance and health hazard. All machines filter 99.9% down to .5 microns and carry a 3 year warranty. Our durable filters last for years without changing.

# Eliminator Series

The Eliminator DFS (Dust Filtration System) Series captures the large amounts of wood dust produced by drum sanders & edgers before it becomes an airborne nuisance and health hazard.



Model	Voltage	Max. Number of machines at one time	1 machine Max. Hose length/machine	2 machines Max. hose length/machine	3 machines Max. hose length/machine	System Includes
Eliminator 2000**	110*	1 Drum Sander	100'	2 Edgers/25'	N/A	(4) 2" x 25' hoses; (1) 2"-1.5" reducer; (10) Collection bags
Eliminator 3000-110	110	1 Drum Sander/ 1 Edger	100'	50'	N/A	(1) 3" x 25' hoses; (3) 2" x 25' hoses; (1) "Y" manifold; (1) 2"-1.5" reducer; (10) Collection bags
Eliminator 3000-220	220***	1 Drum Sander/ 1 Edger	200'	150'	3 Edgers/50'	(1) 3" x 25' hoses; (3) 2" x 25' hoses; (1) "Y" manifold; (1) 2"-1.5" reducer; (10) Collection bags
Eliminator 4000	220***	1 Drum Sander/ 2 Edger	300'	150'	100'	(3) 3" x 25' hoses; (9) 2" x 25' hoses; (1) "Y" manifold; (3) 2"-1.5" reducer; (10) Collection bags

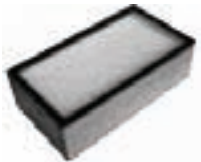
\*220 volt available. \*\* "Super" quiet motor silencer available. \*\*\*Gasoline Motor deck available. HEPA Filtration available on all models. Specifications subject to change.

# Accessories



## FILTER

20091 Filter, 13 Sq. Ft., 1.2M2, WS/D1  
30091 Filter, 28 Sq. Ft., 2.6 M2, DS1  
32970 48 Square Foot Filter



## HEPA FILTER

35211 HEPA Filter 40 Sq. Ft., WS/D1  
30122 DS2 HEPA Filter



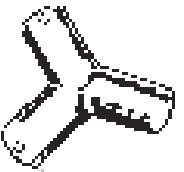
## HOSE ADAPTER

5222 Hose adapter, 2"-1.5"



## CONNECTOR

5220 2" Inlet to hose connector



## Y ADAPTER

90119 Y Adapter, 1.5"x1.5"x1.5"  
90121 Y Adapter, 2"x1.5"x1.5"  
90120 Y Adapter, 2"x2"x2"

## WASTE BAGS

970500-01 Waste Collection bag, 6 mil  
970500 Waste Collection bags, 6 mil,  
roll of 100



## PALM SANDER MANIFOLD

9715 Manifold with Flap Valve,  
1.25"x1.25"x2" with Button Lock



## INLET REDUCER

30009 Inlet Reducer, 70mm-50mm  
30024 Inlet Reducer, 100mm-70mm



## HOSE

209525 Hose, 1.25"x25', Plastic,  
Crush resistant  
501425-LEC Hose, 2"x25', Plastic,  
Crush resistant  
701425-LEC Hose, 3"x 25', Plastic,  
Crush resistant  
5014D Hose Reducer, 2" - 1.5"



## HOSE REELS

Hose reels available, various  
capacities



## WAND

3502 54" Wand, 2-piece  
Aluminum Shaft

## HOSE CARRY BAG

50-6897 Hose Carry Bag



## CREVICE TOOL

350711 11" Crevice Tool, Gray  
Plastic



## FLOOR TOOL

3513 14" Floor Tool, Felt Bladed,  
ABS Plastic Body



## FLOOR TOOL

3512H 14" Floor Brush, Horsehair  
Bristles, ABS Plastic Body



## Power Booster 60 AMP

#LEC-60PB Hook up 220 single  
phase power to our 60 amp booster  
and have (2) 220 single phase sources  
available to run your drum sander  
and your dust filtration system



## OPTIONAL MOTORS

Gasoline powered motors available

